

DESIGNSOLUTIONS

Journal of the Architectural Woodwork Institute

Private Residence
Financial Firm
Restaurant
Courtroom
Executive Suite

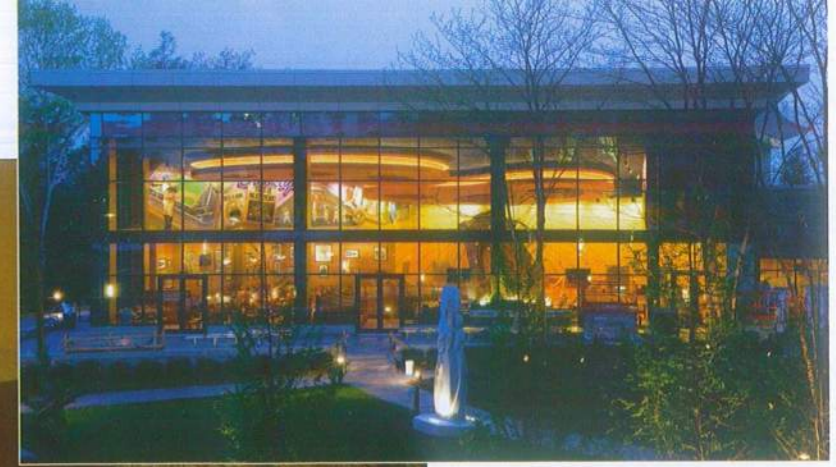


AWI ARCHITECTURAL
WOODWORK
INSTITUTE

RESTAURANT DESIGN OFFERS MENU OF FUN AND FUNCTION.

CONFERENCE CENTER
HOTEL ELEVATORS
SPA
SHRINE

COFFEE
BAKERY



◀ THE RESTAURANT ENTRANCE located in the hotel lobby, designed as a luncheonette, is as inviting as a piece of Junior's creamy cheesecake.

Founded by Harry Rosen in 1950, Junior's landmark Brooklyn restaurant is known as the home of New York's best cheesecake. Three generations of Rosens have dedicated themselves to making this fabulous dessert, and adding to the menu comfort foods such as sandwiches, salads, seafood and steaks.





▲ THE BAR TOP FEATURES solid half-inch copper for the edging and drink rail, glass tiles on the front, and solid surfaces counters.

When the decision was made to bring Junior's to the MGM Grand at Foxwoods Casino in Ledyard, Connecticut, a design was needed to create a visually rich and meaningful impact on its location and guest experience, as well as to the Junior's brand. "It was important for the space to be visually appealing, drawing patrons to a richness that complements the image of the MGM Grand Casino," recalls owner Alan Rosen. "It needed to be bright, colorful and bring a sense of excitement."

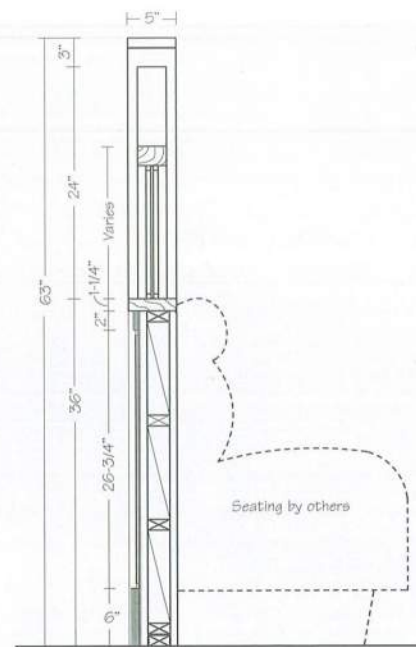
Haverson Architecture and Design P.C., located in Greenwich, Connecticut, was commissioned to design the 12,000 square foot restaurant. The \$5 million project was designed and constructed between October 2007 and May 2008. Architectural woodwork for the project was fabricated by Herrick & White Ltd., an AWI member firm from Cumberland, Rhode Island.

"The space is voluminous and the Junior's design is bold, colorful and expressive of its early 1960s stylistic roots and familiar to its customers," notes Jay Haverson of the design team. Our approach, he continues, was to bring a little bit of Brooklyn

and its heritage to Foxwoods This was achieved through the use of murals, chevron table tops and artifacts from the original restaurant.

PUTTING IT TOGETHER

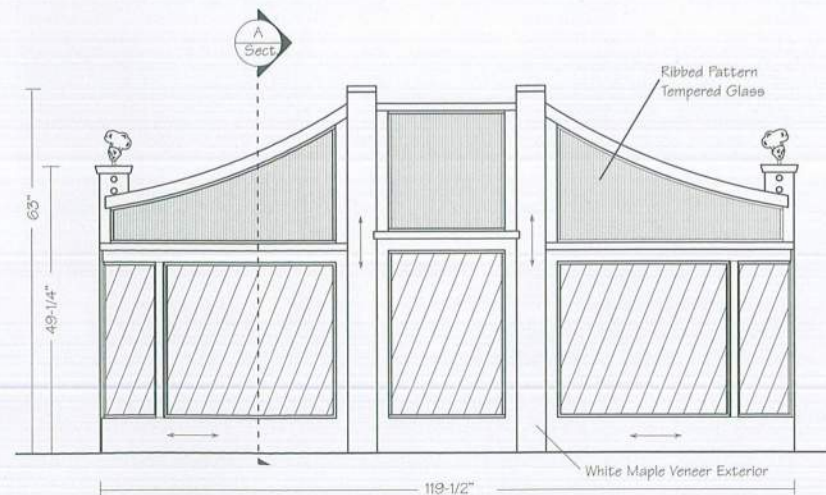
"We entered this project at a very early stage," says Ken Bertram of Herrick & White. "The contractor had a time constraint with the opening of the new MGM Grand, and the drawings were mostly in a conceptual stage. We worked closely with the architect and the contractor providing budget, value engineering, and design suggestions



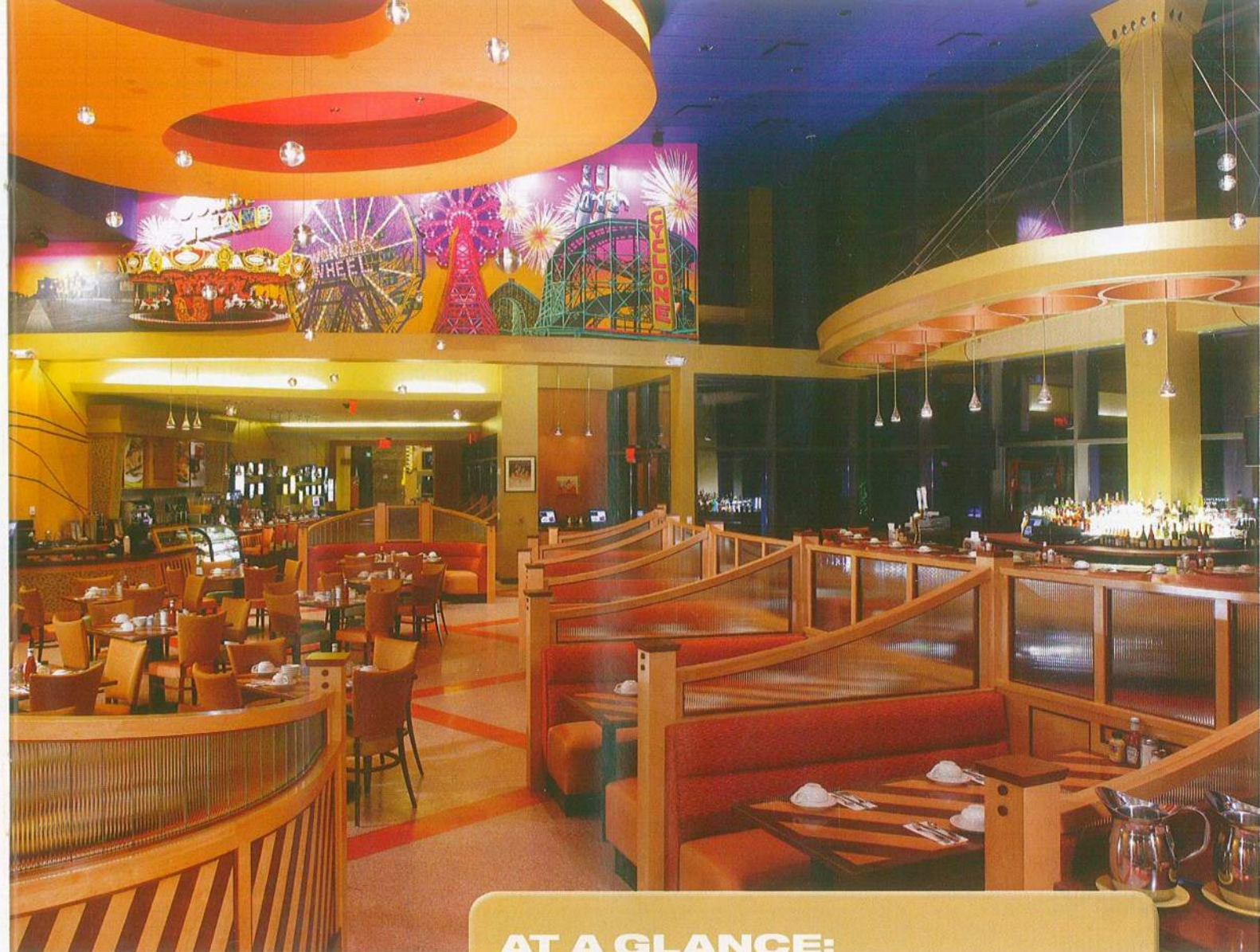
○ VERTICAL SECTION @ Radius Booth

both technically and aesthetically."

Items produced by the woodworking firm include the main bar, bar canopy, back bar, booths, wait stations and luncheon counters. The main bar, back bar, booths, wait stations and counters were constructed using plywood for the structure of the die wall. They were then trimmed off with plain sawn White Maple and rotary sliced Maple plywood, stained and finished with conversion varnish.



○ ELEVATION @ Radius Booth



AT A GLANCE:

AWI SUPPLIER MEMBER: **Herrick & White, Ltd.**

LOCATION: **Cumberland, Rhode Island**

FOUNDED: **1977**

EMPLOYEES: **100+**

FACILITY: **55,000 square feet**

SERVICES: **Architectural millwork, store fixtures and residential millwork.**

"Focused on providing the very best in products and service, we seamlessly combined old world craftsmanship and new world technology, which allows us to offer our customers a quality product at a reasonable cost."

- Ken Bertram

The bar top features Alkemi copper and solid half-inch copper for the edging and drink rail. Glass tiles cover the bar front, and laminated ribbed glass accent the booths. Counters are solid surfaces. The canopy was manufactured using foam core and spiral tubes finished with metallic paint. Its structure is supported with stainless steel stranded wire rope.

FUN AND FUNCTIONAL

"By introducing the metallic paint colors to the woodwork we were able to build the excitement necessary to attract customers," says Rosen, "and at the same time provide a luxurious feeling by using two-toned Maple."

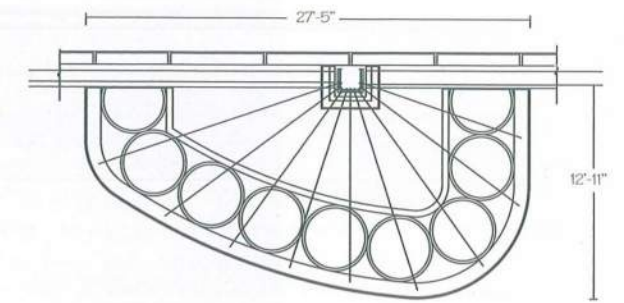
"There was a real challenge in visually and programmatically connecting

the Junior's space to the lobby of the hotel, explains Haverson. The connection was made, he continues, by adding a luncheonette counter.

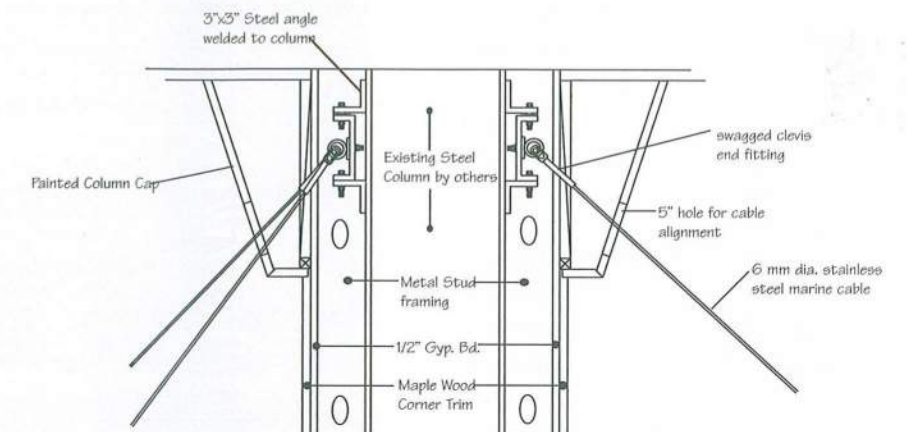
The canopy was the most challenging item to produce, notes Bertram. Because of its sheer size the structure needed to be engineered with a mini-



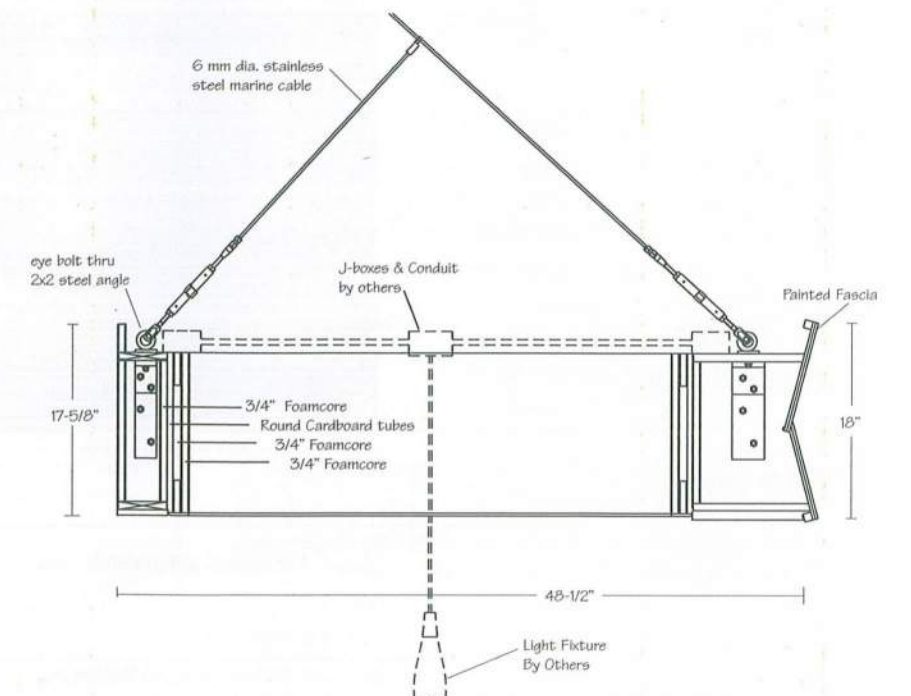
▲ MURALS, CHEVRON TABLE TOPS, METALLIC PAINT and artifacts bring a little bit of Brooklyn and a lot of personality to the restaurant space.



○ PLAN VIEW
@ Bar Canopy



○ VERTICAL SECTION
@ Column Support



○ VERTICAL SECTION
@ Bar Canopy Fixture


mal amount of weight, yet be rigid enough to stay flat and true when supported by the cabling system. "The size of the unit and the load concerns had to be addressed as well," he adds. "The installation required structural beams to be fabricated to lift the unit in place without causing any distortion in the installation process."

From the curved booths to the bar and bar canopy, the nature of the construction of these items seems greatly more complex than the straight work, says Rosen. "The curved canopy includes another level of complexity in that the structural support was of great concern."

A SLICE OF TEAMWORK

"As a third generation owner it is highly important that I produce the same quality product and maintain the same level of high service that has kept us successful for over 50 years," summarizes Rosen. "My relationship with Herrick & White has been good. They have helped with small renovation projects at my other locations. Their product and service meets or exceeds other companies with which I have worked."

Haverson echoes the sentiment. "Herrick & White are consummate professionals, and among the best with whom we have worked. Terrific management, shop drawings, mockups and samples make them very architect/designer friendly."

No matter how you slice it, Junior's entrance into the world of casinos is as a true winner. 



▲ BOLD, BRIGHT AND EXCITING is the entrance to the actual restaurant and bar.

Project:	Junior's Restaurant at Foxwoods Casino	Ledyard, CT
Project Owner:	Alan Rosen	Brooklyn, NY
Woodworker:	Herrick & White Ltd.	Cumberland, RI
Architect:	Haverson Architecture and Design PC	Greenwich, CT
General Contractor:	Suffolk Construction	Boston, MA
Photographer:	Peter Paige Photography	Allendale, NJ